

M-3 & Associates has the thinnest, LED, exterior, work light on the market

SPECIFICATIONS

Shell Material: Aluminum

Color: Light Grey Powder Coat

Size: 13.65" x 10.88" x 1.85"

Opening Size: 12.25" x 9.00"

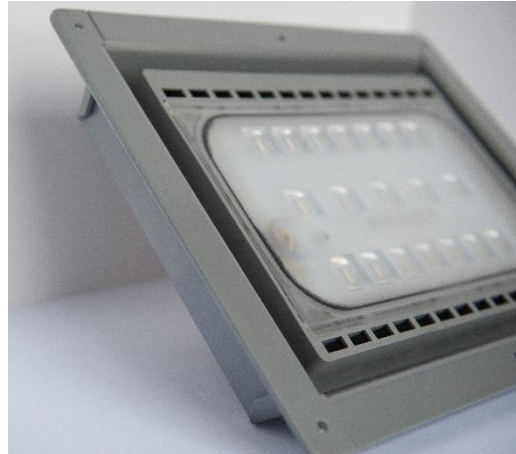
LED Color: 6000-65000K

Voltage: 110 VAC
12 VDC

Current: 0.45A at 110 VAC
4.2A at 12 VDC

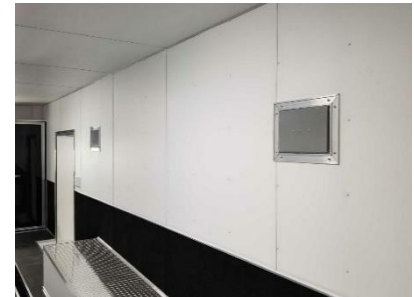
Protection Level: IP65

Light Certifications: ce, PSE, FCC, VDE, SAA, GS, RoHS, EMC, LVD, CCC



- Only 1.85" Deep
- 4500 Lumens, as bright as a 500W Halogen light
- Clean, flush mount look
- Flange mount with pre-drilled holes
- All aluminum, powder coated shell for corrosion resistance and aesthetics
- Available in both 110 VAC and 12 VDC

M-3 & Associates' new low profile LED, exterior, cargo trailer lights. The LED lights are only 1.85" thick, allowing them to be almost completely within the wall of the trailer. Only a thin bezel frames the light on the inside of the trailer. They have tilt capability to put the light where you need it.



The LED light emits 4500 lumens, equivalent the 500 Watt Halogen lights currently used. The aluminum, powder coated, flush mount box gives the trailer a sleek, professional look.

The LED, exterior, cargo trailer lights are available in both 110 VAC and 12 VDC models.

The 12 VDC models can be run directly from the tow vehicle for hours, no generator required. They only draw 4.2 amps.

The low current draw of only 0.45 amps at 110VAC per light, leaves plenty of generator power for your other accessories.



2500 Ada Dr.
Elkhart, IN 46514
574-264-9504
sales@m3assoc.com
www.m3assoc.com